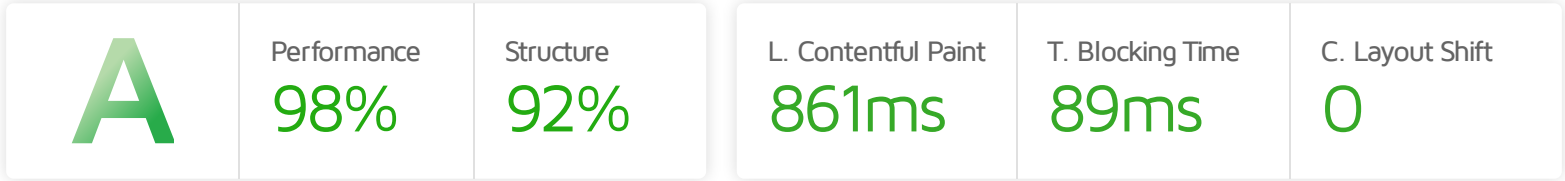


Performance Report for: https://addon.themevolty.com/presta/v1_slivermine_35...

Report generated: Wed, Jul 17, 2024 3:57 AM -0700
 Test Server Location: Vancouver, Canada
 Using: Chrome 117.0.0.0, Lighthouse 11.0.0



Top Issues

Med-High	Avoid an excessive DOM size TBT	2,107 elements
Med	Serve static assets with an efficient cache policy	Potential savings of 876KB
Low	Use passive listeners to improve scrolling performance	1 event listener not passive
Low	Avoid enormous network payloads LCP	Total size was 1.72MB
Low	Use video formats for animated content LCP	Potential savings of 313KB

Focus on these audits first

These audits likely have the largest impact on your page performance.

Structure audits do not directly affect your Performance Score, but improving the audits seen here can help as a starting point for overall performance gains.

Page Details



Total Page Size - 1.72MB



Total Page Requests - 69



HTML JS CSS IMG Video Font Other

How does this affect me?

Modern web users have a short attention span and expect a fast and seamless website experience. Delivering that fast experience can result in more traffic, more conversions, and more happiness.

As if you didn't need more incentive, **Google use Page Speed and Page Experience (including Web Vitals) signals in their ranking algorithm.**

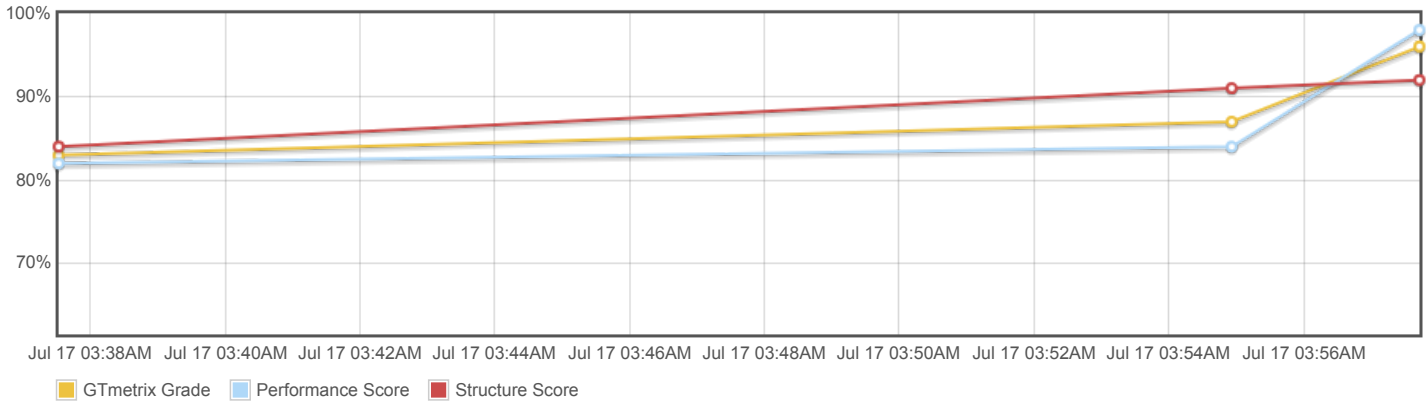
About GTmetrix



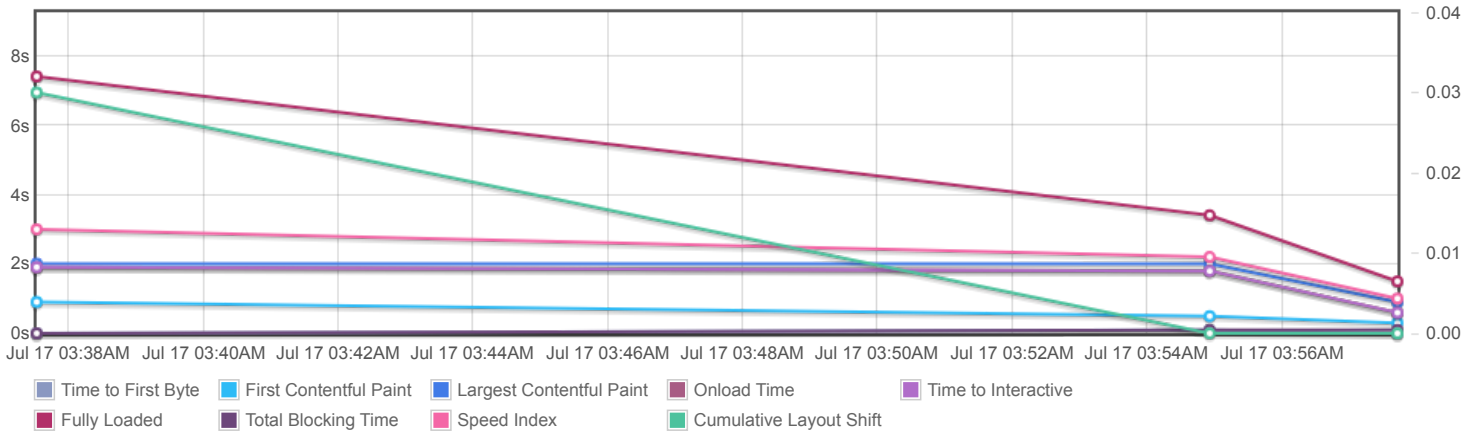
GTmetrix was developed as a tool for customers to easily test the performance of their webpages.

[Learn more about us.](#)

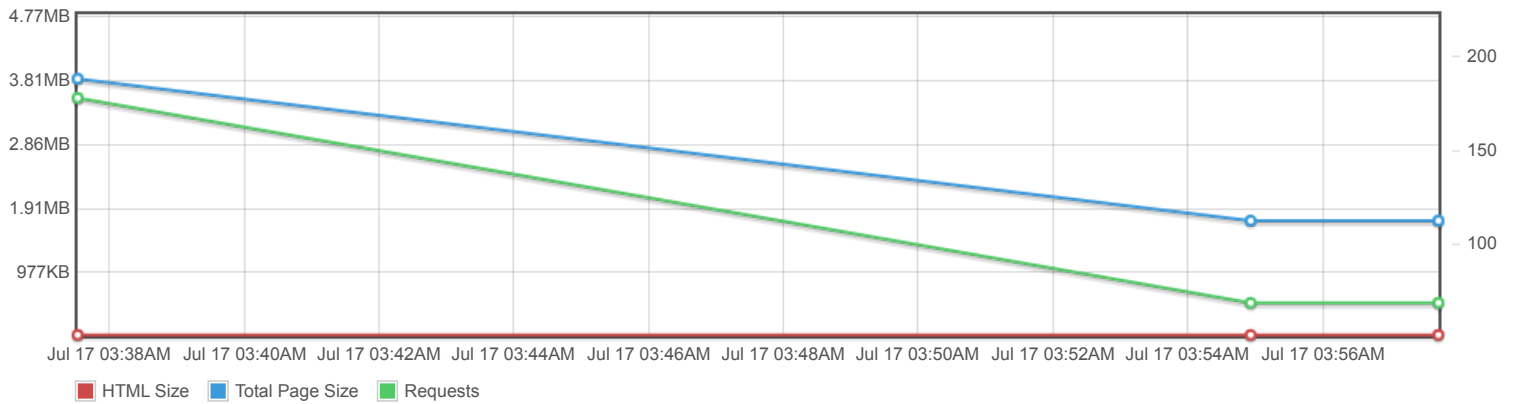
Page scores



Page metrics

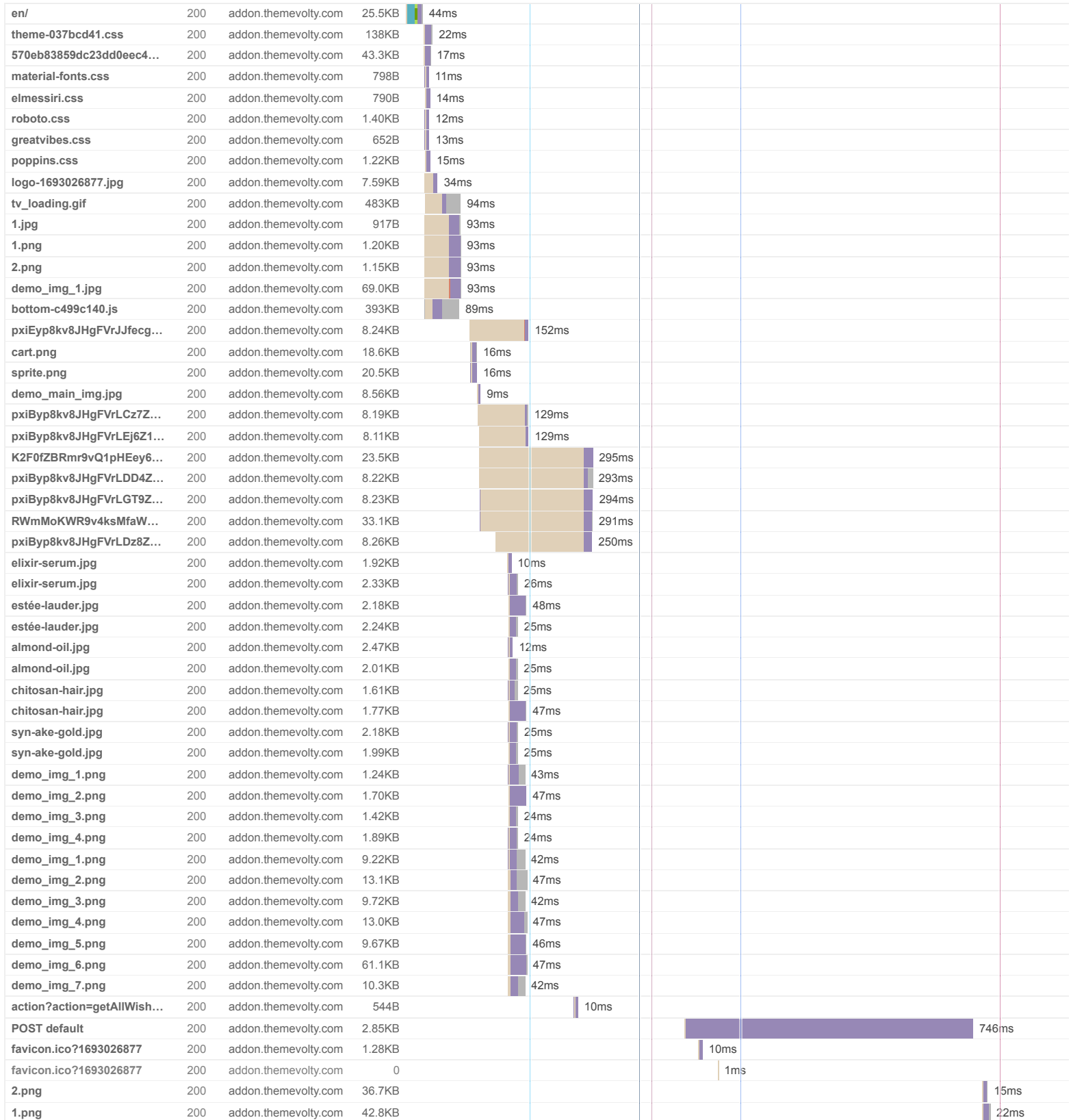


Page sizes and request counts

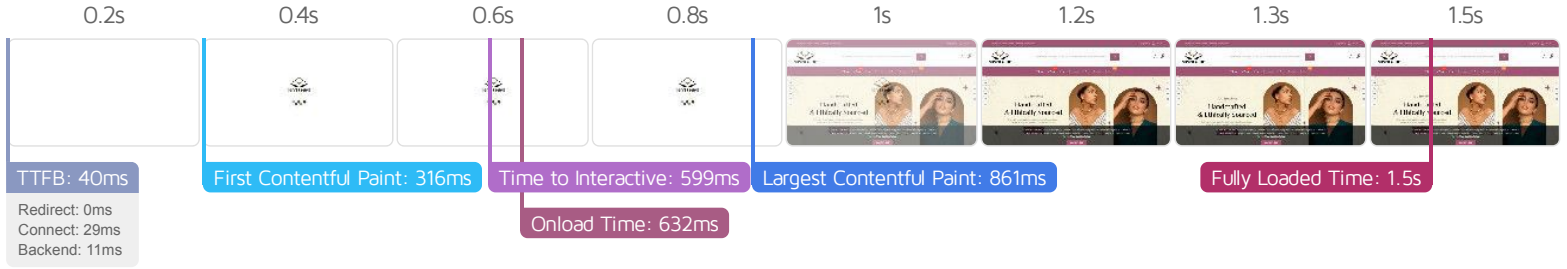


The waterfall chart displays the loading behaviour of your site in your selected browser. It can be used to discover simple issues such as 404's or more complex issues such as external resources blocking page rendering.

Slivermine Store



3.png	200	addon.themevolty.com	19.8KB					17ms
4.png	200	addon.themevolty.com	44.9KB					19ms
5.png	200	addon.themevolty.com	31.4KB					22ms
6.png	200	addon.themevolty.com	19.1KB					20ms
1_1.jpg	200	addon.themevolty.com	14.9KB					42ms
2_1.jpg	200	addon.themevolty.com	19.7KB					22ms
Menu_Banner.jpg	200	addon.themevolty.com	22.8KB					43ms
nanoil-jojoba-oil.jpg	200	addon.themevolty.com	5.43KB					42ms
body-lotion.jpg	200	addon.themevolty.com	3.79KB					40ms
vitamin-hydrating.jpg	200	addon.themevolty.com	4.14KB					40ms
demo_img_1.png	200	addon.themevolty.com	3.17KB					40ms
demo_img_2.png	200	addon.themevolty.com	4.25KB					40ms
demo_img_3.png	200	addon.themevolty.com	3.54KB					40ms
demo_img_4.png	200	addon.themevolty.com	3.49KB					42ms
demo_img_5.png	200	addon.themevolty.com	3.72KB					40ms
demo_img_6.png	200	addon.themevolty.com	3.61KB					40ms
69 Requests		1.72MB (3.56MB Uncompressed)		Fully Loaded 1.5s				(Onload 632ms)



Performance Metrics

<p>First Contentful Paint</p> <p>How quickly content like text or images are painted onto your page. A good user experience is 0.9s or less.</p>	<p>Good - Nothing to do here</p> <p>316ms</p>	<p>Time to Interactive</p> <p>How long it takes for your page to become fully interactive. A good user experience is 2.5s or less.</p>	<p>Good - Nothing to do here</p> <p>599ms</p>
<p>Speed Index</p> <p>How quickly the contents of your page are visibly populated. A good user experience is 1.3s or less.</p>	<p>Good - Nothing to do here</p> <p>1.0s</p>	<p>Total Blocking Time</p> <p>How much time is blocked by scripts during your page loading process. A good user experience is 150ms or less.</p>	<p>Good - Nothing to do here</p> <p>89ms</p>
<p>Largest Contentful Paint</p> <p>How long it takes for the largest element of content (i.e., a hero image) to be painted on your page. A good user experience is 1.2s or less.</p>	<p>Good - Nothing to do here</p> <p>861ms</p>	<p>Cumulative Layout Shift</p> <p>How much your page's layout shifts as it loads. A good user experience is a score of 0.1 or less.</p>	<p>Good - Nothing to do here</p> <p>0</p>

Browser Timings

Redirect	0ms	Connect	29ms	Backend	11ms
TTFB	40ms	First Paint	316ms	DOM Int.	597ms
DOM Loaded	599ms	Onload	632ms	Fully Loaded	1.5s

IMPACT	AUDIT	
Med-High	Avoid an excessive DOM size TBT	2,107 elements
Med	Serve static assets with an efficient cache policy	Potential savings of 876KB
Low	Use passive listeners to improve scrolling performance	1 event listener not passive
Low	Avoid enormous network payloads LCP	Total size was 1.72MB
Low	Use video formats for animated content LCP	Potential savings of 313KB
Low	Properly size images	Potential savings of 174KB
Low	Ensure text remains visible during webfont load FCP LCP	2 fonts found
Low	Avoid long main-thread tasks TBT	3 long tasks found
Low	Reduce JavaScript execution time TBT	288ms spent executing JavaScript
Low	Reduce unused CSS FCP LCP	Potential savings of 125KB
Low	Serve images in next-gen formats	Potential savings of 277KB
Low	Defer offscreen images	Potential savings of 528KB
Low	Avoid non-composited animations CLS	2 animated elements found
Low	Avoid chaining critical requests FCP LCP	2 chains found
Low	Reduce unused JavaScript LCP	Potential savings of 246KB
N/A	Largest Contentful Paint element LCP	860 ms
N/A	Eliminate render-blocking resources FCP LCP	Potential savings of 0 ms
N/A	Reduce initial server response time FCP LCP	Root document took 11ms
N/A	Avoid serving legacy JavaScript to modern browsers TBT	Potential savings of 63B
N/A	Avoid large layout shifts CLS	1 element found
N/A	Minimize main-thread work TBT	Main-thread busy for 1.1s
N/A	User Timing marks and measures	
N/A	Reduce the impact of third-party code TBT	