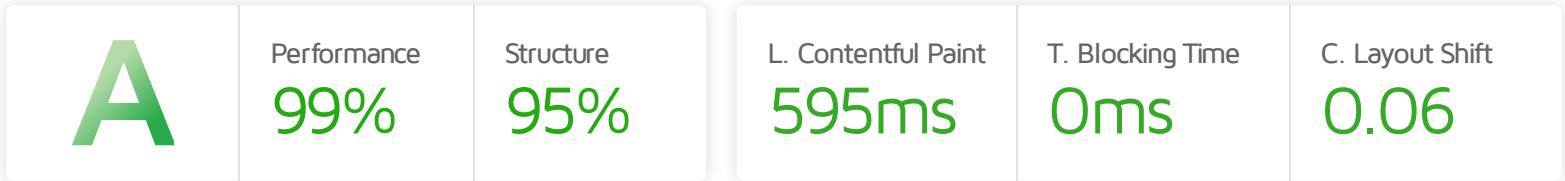


Performance Report for:

https://addon.themevolty.com/presta/v1_carmagnet_41...

Report generated: Wed, Jul 17, 2024 11:13 PM -0700
 Test Server Location: Vancouver, Canada
 Using: Chrome 117.0.0.0, Lighthouse 11.0.0



Top Issues

Med	Avoid an excessive DOM size <small>TBT</small>	1,512 elements
Low	Serve static assets with an efficient cache policy	Potential savings of 58.0KB
Low	Use passive listeners to improve scrolling performance	1 event listener not passive
Low	Avoid large layout shifts <small>CLS</small>	5 elements found
Low	Enable text compression <small>FCP LCP</small>	Potential savings of 1.69KB

Focus on these audits first

These audits likely have the largest impact on your page performance.

Structure audits do not directly affect your Performance Score, but improving the audits seen here can help as a starting point for overall performance gains.

Page Details



Total Page Size - 1.09MB



Total Page Requests - 36



HTML JS CSS IMG Video Font Other

How does this affect me?

Modern web users have a short attention span and expect a fast and seamless website experience. Delivering that fast experience can result in more traffic, more conversions, and more happiness.

As if you didn't need more incentive, **Google use Page Speed and Page Experience (including Web Vitals) signals in their ranking algorithm.**

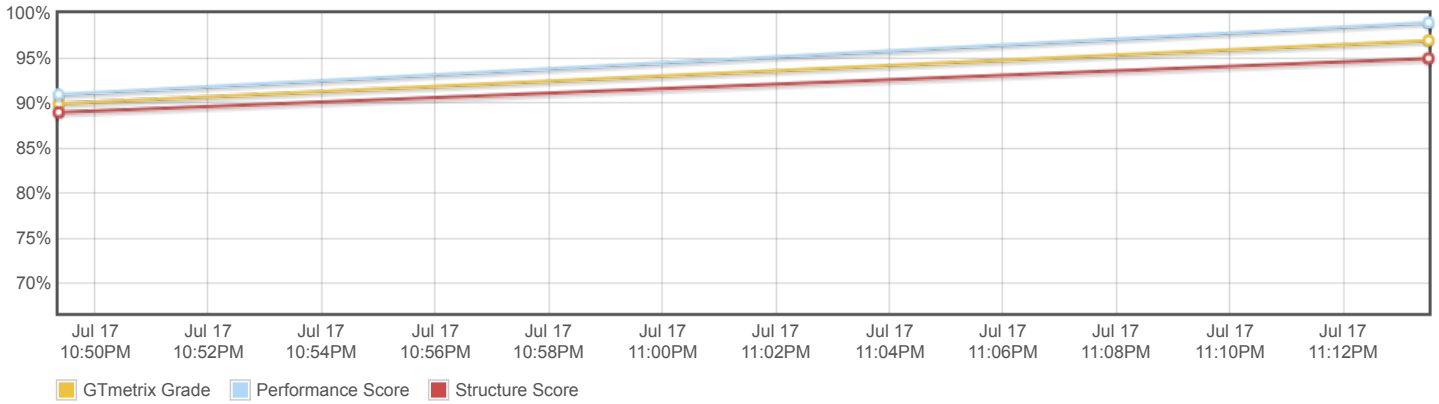
About GTmetrix



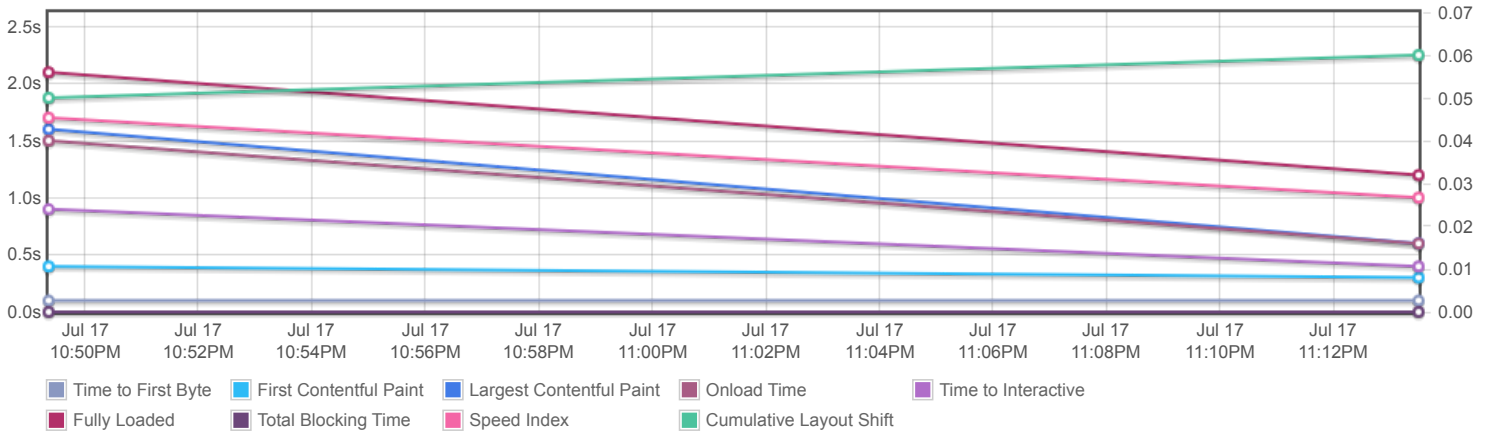
GTmetrix was developed as a tool for customers to easily test the performance of their webpages.

[Learn more about us.](#)

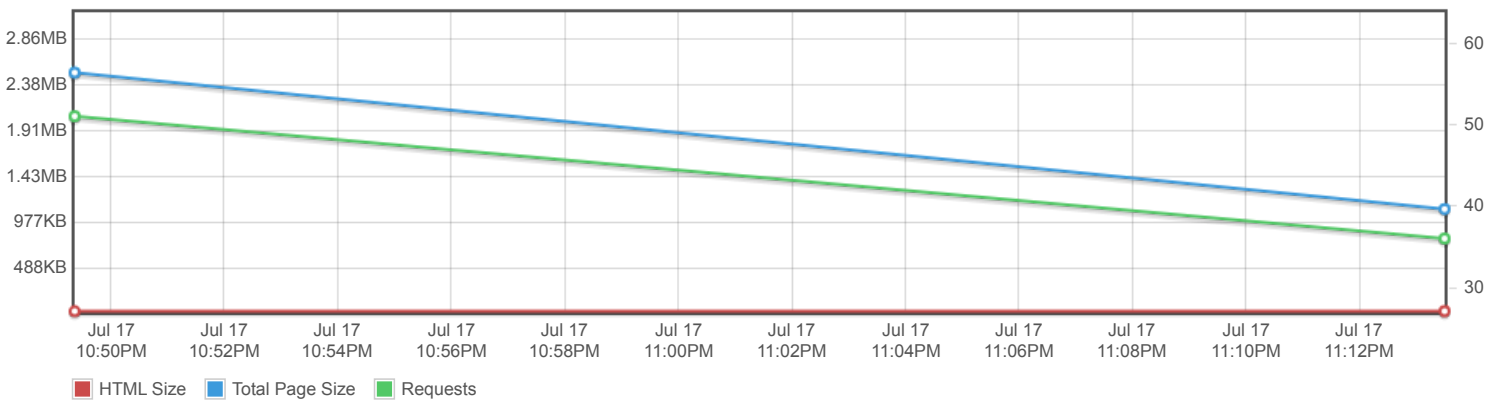
Page scores



Page metrics

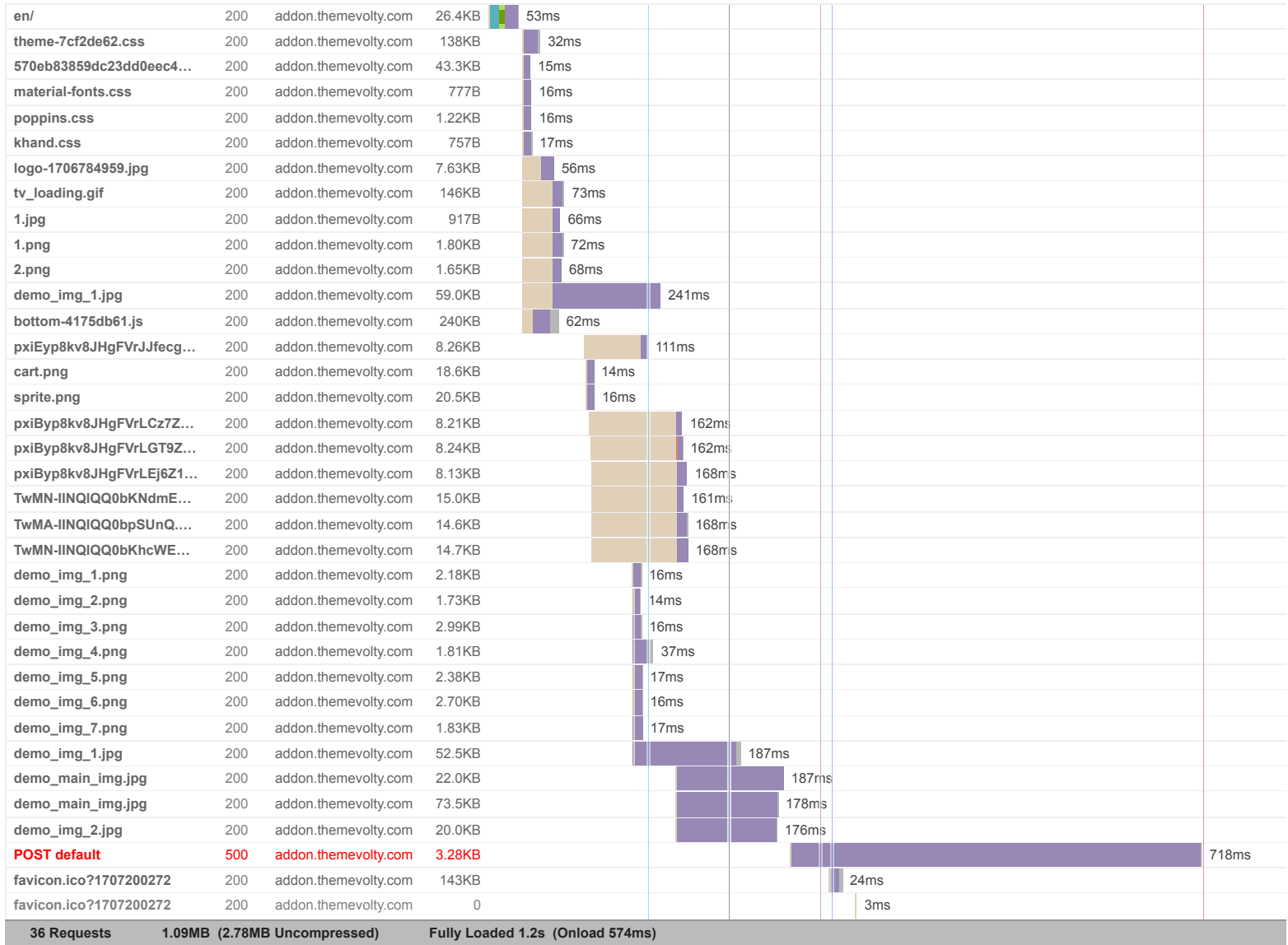


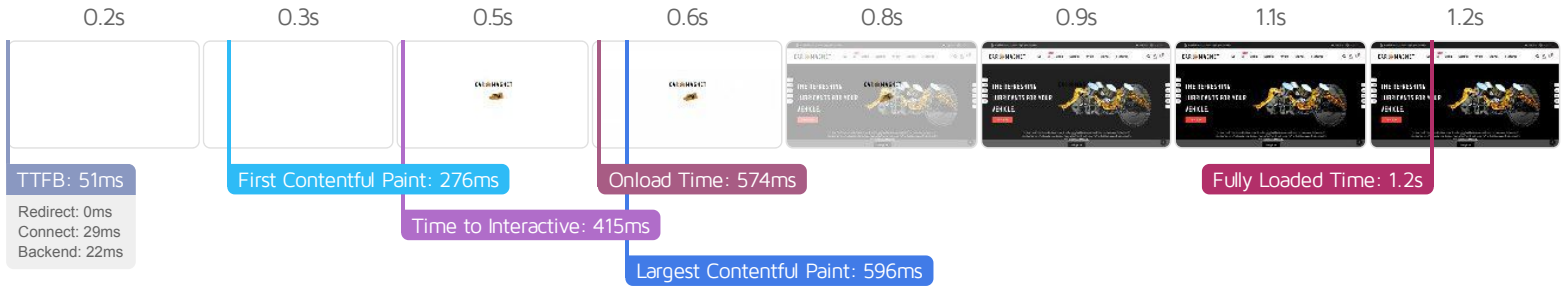
Page sizes and request counts



The waterfall chart displays the loading behaviour of your site in your selected browser. It can be used to discover simple issues such as 404's or more complex issues such as external resources blocking page rendering.

Carmagnet Store





Performance Metrics

<p>First Contentful Paint</p> <p>How quickly content like text or images are painted onto your page. A good user experience is 0.9s or less.</p>	<p>Good - Nothing to do here</p> <p>275ms</p>	<p>Time to Interactive</p> <p>How long it takes for your page to become fully interactive. A good user experience is 2.5s or less.</p>	<p>Good - Nothing to do here</p> <p>414ms</p>
<p>Speed Index</p> <p>How quickly the contents of your page are visibly populated. A good user experience is 1.3s or less.</p>	<p>Good - Nothing to do here</p> <p>972ms</p>	<p>Total Blocking Time</p> <p>How much time is blocked by scripts during your page loading process. A good user experience is 150ms or less.</p>	<p>Good - Nothing to do here</p> <p>0ms</p>
<p>Largest Contentful Paint</p> <p>How long it takes for the largest element of content (i.e., a hero image) to be painted on your page. A good user experience is 1.2s or less.</p>	<p>Good - Nothing to do here</p> <p>595ms</p>	<p>Cumulative Layout Shift</p> <p>How much your page's layout shifts as it loads. A good user experience is a score of 0.1 or less.</p>	<p>Good - Nothing to do here</p> <p>0.06</p>

Browser Timings

Redirect	0ms	Connect	29ms	Backend	22ms
TTFB	51ms	First Paint	276ms	DOM Int.	413ms
DOM Loaded	415ms	Onload	574ms	Fully Loaded	1.2s

IMPACT	AUDIT	
Med	Avoid an excessive DOM size <small>TBT</small>	1,512 elements
Low	Serve static assets with an efficient cache policy	Potential savings of 58.0KB
Low	Use passive listeners to improve scrolling performance	1 event listener not passive
Low	Avoid large layout shifts <small>CLS</small>	5 elements found
Low	Enable text compression <small>FCP LCP</small>	Potential savings of 1.69KB
Low	Avoid enormous network payloads <small>LCP</small>	Total size was 1.09MB
Low	Use video formats for animated content <small>LCP</small>	Potential savings of 73.0KB
Low	Properly size images	Potential savings of 125KB
Low	Ensure text remains visible during webfont load <small>FCP LCP</small>	1 font found
Low	Avoid long main-thread tasks <small>TBT</small>	2 long tasks found
Low	Reduce JavaScript execution time <small>TBT</small>	166ms spent executing JavaScript
Low	Reduce unused CSS <small>FCP LCP</small>	Potential savings of 127KB
Low	Serve images in next-gen formats	Potential savings of 83.0KB
Low	Defer offscreen images	Potential savings of 275KB
Low	Avoid chaining critical requests <small>FCP LCP</small>	2 chains found
Low	Reduce unused JavaScript <small>LCP</small>	Potential savings of 175KB
N/A	Largest Contentful Paint element <small>LCP</small>	600 ms
N/A	Eliminate render-blocking resources <small>FCP LCP</small>	Potential savings of 0 ms
N/A	Reduce initial server response time <small>FCP LCP</small>	Root document took 21ms
N/A	Avoid serving legacy JavaScript to modern browsers <small>TBT</small>	Potential savings of 59B
N/A	Minimize main-thread work <small>TBT</small>	Main-thread busy for 916ms
N/A	User Timing marks and measures	
N/A	Reduce the impact of third-party code <small>TBT</small>	